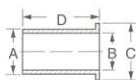


**Tube Supports for Plastic  
Tubing**


Use only with PT200 and PT240 Tubing.

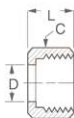
\* For tubing with .126 I.D./ .062 wall.

\*\* For tubing with .170 I.D./ .040 wall.

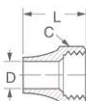
| Tube<br>O.D. | Catalog<br>Number | Dia.<br>A | Dia.<br>B | Dia.<br>C | Length<br>D |
|--------------|-------------------|-----------|-----------|-----------|-------------|
| 1/4          | 2030x4*           | 1/8       | 3/32      | 11/64     | 19/32       |
| 1/4          | 2030x44**         | 11/64     | 9/64      | 7/32      | 17/32       |
| 5/16         | 2030x5            | 3/16      | 5/32      | 15/64     | 5/8         |
| 3/8          | 2030x6            | 1/4       | 7/32      | 11/32     | 41/64       |
| 1/2          | 2030x8            | 3/8       | 11/32     | 7/16      | 13/16       |
| 5/8          | 2030x10           | 1/2       | 29/64     | 35/64     | 13/16       |
| 3/4          | 2030x12           | 9/16      | 33/64     | 11/16     | 1-1/32      |

**Sleeve**

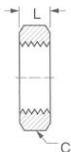

| Tube<br>O.D. | Catalog<br>Number | D     | F    | L   |
|--------------|-------------------|-------|------|-----|
| 1/8          | 601x2             | .130  | .25  | .20 |
| 3/16         | 601x3             | .193  | .31  | .20 |
| 1/4          | 601x4             | .256  | .38  | .26 |
| 5/16         | 601x5             | .318  | .44  | .26 |
| 3/8          | 601x6             | .381  | .50  | .26 |
| 1/2          | 601x8             | .507  | .62  | .30 |
| 5/8          | 601x10            | .630  | .72  | .36 |
| 3/4          | 601x12            | .755  | .88  | .38 |
| 1            | 601x16            | 1.005 | 1.19 | .50 |

**Nut**


| Tube<br>O.D. | Catalog<br>Number | Hex<br>C | D   | L   |
|--------------|-------------------|----------|-----|-----|
| 1/8          | 611x2             | 3/8      | .14 | .38 |
| 3/16         | 611x3             | 7/16     | .19 | .38 |
| 1/4          | 611x4             | 1/2      | .26 | .44 |
| 5/16         | 611x5             | 9/16     | .32 | .44 |
| 3/8          | 611x6             | 5/8      | .38 | .44 |
| 1/2          | 611x8             | 13/16    | .51 | .52 |
| 5/8          | 611x10            | 15/16    | .64 | .56 |
| 3/4          | 611x12            | 1-3/16   | .76 | .56 |

**Long Nut**


| Tube<br>O.D. | Catalog<br>Number | Hex<br>C | D    | L   |
|--------------|-------------------|----------|------|-----|
| 3/16         | 1611x3            | 7/16     | .193 | .62 |
| 1/4          | 1611x4            | 9/16     | .260 | .75 |
| 3/8          | 1611x6            | 11/16    | .380 | .88 |

**Bulkhead Nut**


| Tube<br>O.D. | Catalog<br>Number | Hex<br>C | L   |
|--------------|-------------------|----------|-----|
| 1/4          | 0102x4            | 9/16     | .25 |
| 5/16         | 0102x5            | 5/8      | .25 |
| 3/8          | 0102x6            | 11/16    | .25 |
| 1/2          | 0102x8            | 15/16    | .38 |

Use on 741x Bulkhead Unions. Ref. page 58.



## SA-1 • SECONDARY AIR SYSTEMS KIT

Ideal for fleet repair shops, truck dealers, garages and truck stops. SA-1 contains an assortment of popular 1/8" and 1/4" brass fittings plus 200' of Weatherhead NT100 SAE J844 Nylon tubing. The 1/8" fittings are Weatherhead SELFALIGN® and 1/4" fittings are Weatherhead 1400 series air brake. The sturdy box keeps the tubing and fittings together for quick and easy servicing of the tubing used on shifters, PTO's, wipers, horns, remote air, instrumentation, etc. All of the parts are organized at your finger tips. The SA-1 is a must for all vehicle air system maintenance facilities.

**Size:** 15" wide, 3-1/2" high, 14-1/2" deep.

| Catalog Number | Qty. | Catalog Number | Qty. |
|----------------|------|----------------|------|
| 1460x4         | 10   | 601x2          | 10   |
| 1461x4         | 5    | 611x2          | 5    |
| 1462x4         | 2    | 621x2          | 2    |
| 1464x4         | 1    | 661x2          | 2    |
| 1468x4         | 2    | 681x2          | 2    |
| 1468x4x1       | 2    | 681x2x1        | 2    |
| 1468x4x4       | 2    | 691x2          | 2    |
| 1469x4         | 2    | 691x2x1        | 2    |
| 1469x4x4       | 2    | BF-40X         | 1    |
| 1484x4         | 5    | NT10002BK-100  | 100' |
|                |      | NT10004BK-100  | 100' |



## SA-2 • SECONDARY AIR SYSTEMS KIT

The SA-2 assortment enables you to supply fleets and dealers with fittings and tubing for 1/4" and 3/8" O.D. air brake applications. 1/8" O.D. tubing and fittings are also supplied for applications such as transmission shifter, air horn, gauge and flat adjustment. A cabinet is also supplied for easy storage on shelves and bench tops.

| Catalog Number | Qty. | Catalog Number | Qty. |
|----------------|------|----------------|------|
| 1460x4         | 10   | 1468x6x2       | 5    |
| 1460x6         | 20   | 1468x6x6       | 5    |
| 1461x4         | 5    | 1468x6x8       | 5    |
| 1461x6         | 10   | 1469x4         | 5    |
| 1462x4         | 5    | 1469x4x4       | 5    |
| 1462x6         | 10   | 1469x6         | 10   |
| 1464x4         | 2    | 1469x6x6       | 5    |
| 1464x6         | 2    | 601x2          | 10   |
| 1466x6         | 5    | 611x2          | 10   |
| 1468x4         | 5    | 621x2          | 5    |
| 1468x4x4       | 5    | 661x2          | 5    |
| 1468x4x6       | 2    | 681x2          | 5    |
| 1472x4         | 5    | 681x2x1        | 2    |
| 1472x6         | 5    | 691x2          | 5    |
| 1472x6x6x6     | 5    | 691x2x1        | 2    |
| 1484x4         | 10   | BL-456-X       | 1    |
| 1484x6         | 10   | FS-SA-2        | 1    |
| 1485x4         | 10   | NT10002BK-100  | 100' |
| 1485x6         | 10   | NT10004BK-100  | 100' |
| 1468x6         | 10   | NT10006BK-100  | 100' |