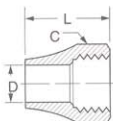


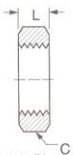
Long Nut

(Ref. SAE No. 060111)



Tube O.D.	Catalog Number	Hex C	D	L
3/16	1611x3	7/16	.193	.62
1/4	1611x4	9/16	.260	.75
5/16	1611x5*	5/8	.320	.84
3/8	1611x6	11/16	.380	.88
1/2	1611x8*	13/16	.510	1.06
5/8	1611x10*	15/16	.637	1.08
3/4	1611x12*	1-1/8	.760	1.38
1	1611x16*	1-3/8	1.020	1.59

Bulkhead Nut

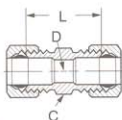


Used on 74x Bulkhead Unions. Ref. page 51.

Tube O.D.	Catalog Number	Hex C	L	Thread Size
1/4	0102x4	9/16	.25	7/16-24
5/16	0102x5	5/8	.25	1/2-24
3/8	0102x6	11/16	.25	9/16-24
1/2	0102x8	15/16	.38	11/16-20

Union

(Ref. SAE No. 060101BA)

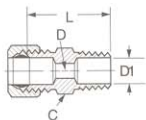


Assembly with long nut 162x

Tube O.D.	Catalog Number	Hex C	D	L
1/8	62x2	5/16	.094	.66
3/16	62x3	3/8	.125	.76
1/4	62x4	7/16	.188	.79
5/16	62x5	1/2	.250	.88
3/8	62x6	9/16	.312	.97
1/2	62x8	11/16	.406	1.10
5/8	62x10	13/16	.500	1.25
3/4	62x12*	1	.562	1.44

Male Connector

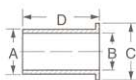
(Ref. SAE No. 060102BA)



Assembly with long nut 168x

*Available only as assembly with long nut.

Tube O.D.	Male Pipe Thread	Catalog Number	Hex C	D	D1 Opt.	L
1/8	1/16	68x2x1	3/8	.094	-	.78
1/8	1/8	68x2	7/16	.094	.094	.78
3/16	1/8	68x3	7/16	.125	.125	.84
3/16	1/4	68x3x4*	9/16	.125	.125	1.03
1/4	1/8	68x4	7/16	.188	.188	.88
1/4	1/4	68x4x4	9/16	.188	.312	1.06
5/16	1/8	68x5	1/2	.250	.234	.91
5/16	1/4	68x5x4	9/16	.250	.250	1.09
3/8	1/8	68x6x2	9/16	.312	.250	.97
3/8	1/4	68x6	9/16	.312	.312	1.17
3/8	3/8	68x6x6	11/16	.312	.312	1.16
3/8	1/2	68x6x8	7/8	.312	.562	1.34
7/16	1/4	68x7*	5/8	.312	.312	1.19
1/2	1/4	68x8x4	11/16	.406	.281	1.22
1/2	3/8	68x8	11/16	.406	.406	1.22
1/2	1/2	68x8x8	7/8	.406	.406	1.41
5/8	1/2	68x10	7/8	.500	.500	1.50
3/4	1/2	68x12*	1	.562	.562	1.62
3/4	3/4	68x12x12*	1-1/16	.562	.875	1.62

**Tube Supports for Plastic
Tubing**


Use only with PT200 and PT240 Tubing.

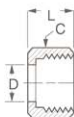
* For tubing with .126 I.D./ .062 wall.

** For tubing with .170 I.D./ .040 wall.

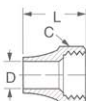
Tube O.D.	Catalog Number	Dia. A	Dia. B	Dia. C	Length D
1/4	2030x4*	1/8	3/32	11/64	19/32
1/4	2030x44**	11/64	9/64	7/32	17/32
5/16	2030x5	3/16	5/32	15/64	5/8
3/8	2030x6	1/4	7/32	11/32	41/64
1/2	2030x8	3/8	11/32	7/16	13/16
5/8	2030x10	1/2	29/64	35/64	13/16
3/4	2030x12	9/16	33/64	11/16	1-1/32

Sleeve

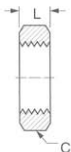

Tube O.D.	Catalog Number	D	F	L
1/8	601x2	.130	.25	.20
3/16	601x3	.193	.31	.20
1/4	601x4	.256	.38	.26
5/16	601x5	.318	.44	.26
3/8	601x6	.381	.50	.26
1/2	601x8	.507	.62	.30
5/8	601x10	.630	.72	.36
3/4	601x12	.755	.88	.38
1	601x16	1.005	1.19	.50

Nut


Tube O.D.	Catalog Number	Hex C	D	L
1/8	611x2	3/8	.14	.38
3/16	611x3	7/16	.19	.38
1/4	611x4	1/2	.26	.44
5/16	611x5	9/16	.32	.44
3/8	611x6	5/8	.38	.44
1/2	611x8	13/16	.51	.52
5/8	611x10	15/16	.64	.56
3/4	611x12	1-3/16	.76	.56

Long Nut


Tube O.D.	Catalog Number	Hex C	D	L
3/16	1611x3	7/16	.193	.62
1/4	1611x4	9/16	.260	.75
3/8	1611x6	11/16	.380	.88

Bulkhead Nut


Tube O.D.	Catalog Number	Hex C	L
1/4	0102x4	9/16	.25
5/16	0102x5	5/8	.25
3/8	0102x6	11/16	.25
1/2	0102x8	15/16	.38

Use on 741x Bulkhead Unions. Ref. page 58.