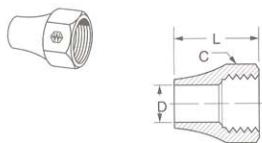


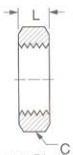
Long Nut

(Ref. SAE No. 060111)



Tube O.D.	Catalog Number	Hex C	D	L
3/16	1611x3	7/16	.193	.62
1/4	1611x4	9/16	.260	.75
5/16	1611x5*	5/8	.320	.84
3/8	1611x6	11/16	.380	.88
1/2	1611x8*	13/16	.510	1.06
5/8	1611x10*	15/16	.637	1.08
3/4	1611x12*	1-1/8	.760	1.38
1	1611x16*	1-3/8	1.020	1.59

Bulkhead Nut

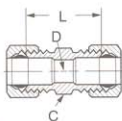
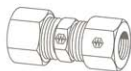


Used on 74x Bulkhead Unions. Ref. page 51.

Tube O.D.	Catalog Number	Hex C	L	Thread Size
1/4	0102x4	9/16	.25	7/16-24
5/16	0102x5	5/8	.25	1/2-24
3/8	0102x6	11/16	.25	9/16-24
1/2	0102x8	15/16	.38	11/16-20

Union

(Ref. SAE No. 060101BA)

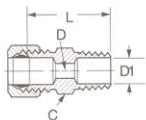


Assembly with long nut 162x

Tube O.D.	Catalog Number	Hex C	D	L
1/8	62x2	5/16	.094	.66
3/16	62x3	3/8	.125	.76
1/4	62x4	7/16	.188	.79
5/16	62x5	1/2	.250	.88
3/8	62x6	9/16	.312	.97
1/2	62x8	11/16	.406	1.10
5/8	62x10	13/16	.500	1.25
3/4	62x12*	1	.562	1.44

Male Connector

(Ref. SAE No. 060102BA)

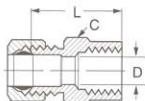


Assembly with long nut 168x

*Available only as assembly with long nut.

Tube O.D.	Male Pipe Thread	Catalog Number	Hex C	D	D1 Opt.	L
1/8	1/16	68x2x1	3/8	.094	-	.78
1/8	1/8	68x2	7/16	.094	.094	.78
3/16	1/8	68x3	7/16	.125	.125	.84
3/16	1/4	68x3x4*	9/16	.125	.125	1.03
1/4	1/8	68x4	7/16	.188	.188	.88
1/4	1/4	68x4x4	9/16	.188	.312	1.06
5/16	1/8	68x5	1/2	.250	.234	.91
5/16	1/4	68x5x4	9/16	.250	.250	1.09
3/8	1/8	68x6x2	9/16	.312	.250	.97
3/8	1/4	68x6	9/16	.312	.312	1.17
3/8	3/8	68x6x6	11/16	.312	.312	1.16
3/8	1/2	68x6x8	7/8	.312	.562	1.34
7/16	1/4	68x7*	5/8	.312	.312	1.19
1/2	1/4	68x8x4	11/16	.406	.281	1.22
1/2	3/8	68x8	11/16	.406	.406	1.22
1/2	1/2	68x8x8	7/8	.406	.406	1.41
5/8	1/2	68x10	7/8	.500	.500	1.50
3/4	1/2	68x12*	1	.562	.562	1.62
3/4	3/4	68x12x12*	1-1/16	.562	.875	1.62

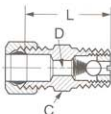
Female Connector (Ref. SAE No. 060103BA)



Assembly with long nut **166x**

Tube O.D.	Fem. Pipe Thread	Catalog Number	Hex C	D	L
1/8	1/8	66x2	9/16	.094	.75
3/16	1/8	66x3	9/16	.125	.78
1/4	1/8	66x4	9/16	.188	.78
1/4	1/4	66x4x4	11/16	.188	1.03
5/16	1/8	66x5	9/16	.250	.81
5/16	1/4	66x5x4*	11/16	.250	1.03
3/8	1/8	66x6x2	9/16	.312	.84
3/8	1/4	66x6	11/16	.312	1.06
1/2	3/8	66x8	13/16	.406	1.12
5/8	1/2	66x10*	1	.500	1.38

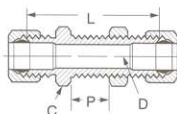
Male Ball Check Connector



Assembly with long nut **163x**. Min. working pressure 3 psi. Ball and spring position may be reversed to change flow/check direction. Ball check valves are neither tested nor adjusted prior to sale.

Tube O.D.	Male Pipe Thread	Catalog Number	Hex C	D	L
1/4	1/8	63x4	7/16	.125	.88
5/16	1/8	63x5	1/2	.125	.91
3/8	1/4	63x6	9/16	.219	1.16

Bulkhead Union



Assembly with long nut **174x**
For Bulkhead Nuts, ref. page 50, included with assembly.

Tube O.D.	Catalog Number	Hex C	D	L	Max. P
1/4	74x4	9/16	.188	1.57	.52
3/8	74x6*	11/16	.312	1.76	.55