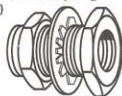
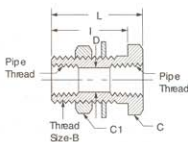


# Bulkhead Couplings

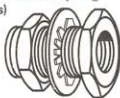
**Bulkhead Coupling (Steel)**



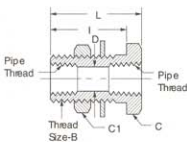
| FEMALE PIPE THREAD | CATALOG NUMBER | THREAD SIZE B | HEX C | HEX C1 | D    | I    | L    |
|--------------------|----------------|---------------|-------|--------|------|------|------|
| 1/4                | W05465         | 3/4-16        | 1     | 1-1/16 | .422 | 1.25 | 1.50 |
| 1/4                | W21204         | 3/4-16        | 1     | 1-1/16 | .422 | .69  | .94  |
| 3/8                | W17709         | 1-14          | 1-1/8 | 1-3/8  | .563 | 1.06 | 1.31 |



**Bulkhead Coupling (Brass)**



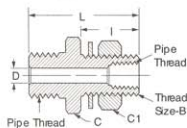
| FEMALE PIPE THREAD | CATALOG NUMBER | THREAD SIZE B | HEX C | HEX C1 | D    | I    | L    |
|--------------------|----------------|---------------|-------|--------|------|------|------|
| 1/4                | 1344           | 3/4-16        | 1     | 1-1/16 | .422 | 1.25 | 1.50 |
| 1/4                | 1345           | 3/4-16        | 1     | 1-1/16 | .422 | .69  | .94  |
| 3/8                | 1346           | 1-14          | 1-1/8 | 1-3/8  | .563 | 1.06 | 1.31 |
| 1/2                | 1351           | 1-1/8-14      | 1-1/4 | 1-3/8  | .703 | 1.19 | 1.50 |



**Bulkhead Coupling (Steel)**



| MALE PIPE THREAD | FEMALE PIPE THREAD | CATALOG NUMBER | THREAD SIZE B | HEX C | HEX C1 | D    | I    | L    |
|------------------|--------------------|----------------|---------------|-------|--------|------|------|------|
| 1/2              | 1/4                | W05498         | 3/4-16        | 1-1/4 | 1-1/16 | .312 | 1.13 | 2.16 |
| 1/2              | 1/4                | W05499         | 3/4-16        | 1-1/4 | 1-1/16 | .312 | 1.53 | 2.53 |



# Steel Adapters

Pipe Coupling  
(Ref. SAE No. 140138)



| FEM. PIPE<br>THREAD | FEM. PIPE<br>THREAD | CATALOG<br>NUMBER |
|---------------------|---------------------|-------------------|
| 1/8                 | 1/8                 | C3309x2           |
| 1/4                 | 1/8                 | C3309x4x2         |
| 1/4                 | 1/4                 | C3309x4           |
| 3/8                 | 1/4                 | C3309x6x4         |
| 3/8                 | 3/8                 | C3309x6           |
| 1/2                 | 1/4                 | C3309x8x4         |
| 1/2                 | 3/8                 | C3309x8x6         |
| 1/2                 | 1/2                 | C3309x8           |
| 3/4                 | 1/2                 | C3309x12x8        |
| 3/4                 | 3/4                 | C3309x12          |
| 1                   | 3/4                 | C3309x16x12       |
| 1                   | 1                   | C3309x16          |
| 1-1/4               | 1-1/4               | C3309x20          |
| 1-1/2               | 1-1/2               | C3309x24          |
| 2                   | 2                   | C3309x32          |

\*3321x

Male Straight Thread  
O-Ring To Male Pipe  
Adapter



| MALE PORT<br>SIZE | MALE PIPE<br>THREAD | CATALOG<br>NUMBER |
|-------------------|---------------------|-------------------|
| 1/4               | 1/8                 | C3249x4x2         |
| 3/8               | 1/4                 | C3249x6x4         |
| 1/2               | 3/8                 | C3249x8x6         |
| 1/2               | 1/2                 | C3249x8x8         |
| 5/8               | 1/2                 | C3249x10x8        |
| 3/4               | 3/4                 | C3249x12x12       |
| 1                 | 1                   | C3249x16x16       |
| 1-1/4             | 1-1/4               | C3249x20x20       |
| 1-1/2             | 1-1/2               | C3249x24x24       |
| 2                 | 2                   | C3249x32x32       |

Hex Pipe Nipple  
(Ref. SAE No. 140137)



| MALE PIPE<br>THREAD | MALE PIPE<br>THREAD | CATALOG<br>NUMBER |
|---------------------|---------------------|-------------------|
| 1/16                | 1/16                | C3069x1           |
| 1/8                 | 1/16                | C3069x2x1         |
| 1/8                 | 1/8                 | C3069x2           |
| 1/4                 | 1/8                 | C3069x4x2         |
| 1/4                 | 1/4                 | C3069x4           |
| 3/8                 | 1/8                 | C3069x6x2         |
| 3/8                 | 1/4                 | C3069x6x4         |
| 3/8                 | 3/8                 | C3069x6           |
| 1/2                 | 1/4                 | C3069x8x4         |
| 1/2                 | 3/8                 | C3069x8x6         |
| 1/2                 | 1/2                 | C3069x8           |
| 3/4                 | 1/2                 | C3069x12x8        |
| 3/4                 | 3/4                 | C3069x12          |
| 1                   | 3/4                 | C3069x16x12       |
| 1                   | 1                   | C3069x16          |
| 1-1/4               | 1-1/4               | C3069x20          |
| 1-1/2               | 1-1/2               | C3069x24          |
| 2                   | 2                   | C3069x32          |

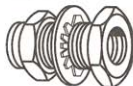
\*3081x

45° Pipe Elbow  
(Ref. SAE  
No. 140338)



| FEMALE PIPE<br>THREAD | CATALOG<br>NUMBER |
|-----------------------|-------------------|
| 3/8                   | C3559x6           |
| 1/2                   | C3559x8           |
| 3/4                   | C3559x12          |
| 1                     | C3559x16          |
| 1/4                   | TF3559x4          |

Bulkhead  
Coupling



| FEMALE PIPE<br>THREAD | CATALOG<br>NUMBER |
|-----------------------|-------------------|
| 1/4                   | W05465            |
| 1/4                   | W21204            |
| 3/8                   | W17709            |

\*Stainless Steel Catalog number.  
□ Available in Stainless Steel.