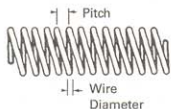


Hose Sleeves and Guards

Round Wire Spring Guard



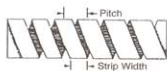
Spring guards should be considered for those applications which call for tough, steel armor protection. They offer heavy-duty hose defense against cuts and abrasion, with the added benefit of kink resistance and the ability to mold hose assembly routing for applications which require tight bends.

Material: Hot Dipped Galvanized steel, chemically treated and oiled.

GUARD I.D.	CATALOG NUMBER	PACKAGE LENGTH (FT)	WIRE DIAMETER	PITCH
.515	A1900	100'	.063	.188
.515	A1900-20	20'	.063	.188
.550	A1901	100'	.063	.188
.550	A1901-20	20'	.063	.188
.610	AS1902	100'	.063	.188
.610	A1902-20	20'	.063	.188
.650	A1903	100'	.080	.188
.650	A1903-20	20'	.080	.188
.750	A1904	100'	.080	.188
.750	A1904-20	20'	.080	.188
.835	A1905	100'	.080	.188
.835	A1905-20	20'	.080	.188
.900	A1906	100'	.080	.188
.900	A1906-20	20'	.080	.188
.990	A1907	100'	.080	.188
.990	A1907-20	20'	.080	.188
1.055	A1908	100'	.080	.188
1.055	A1908-20	20'	.080	.188
1.110	A1909	100'	.080	.250
1.110	A1909-20	20'	.080	.250
1.240	A1910	100'	.080	.250
1.240	A1910-20	20'	.080	.250
1.300	A1911	60'	.120	.375
1.300	A1911-20	20'	.120	.375
1.380	A1912	60'	.120	.375
1.630	A1913	60'	.120	.375
1.810	A1915	60'	.120	.375
2.000	A1916	40'	.120	.375
2.125	A1917	40'	.120	.375
2.300	A1919	40'	.120	.375

Hose Sleeves and Guards

Flat Wire Spring Guard



Spring guards should be considered for those applications which call for tough, steel armor protection. They offer heavy-duty hose defense against cuts and abrasion, with the added benefit of kink resistance and the ability to mold hose assembly routing for applications which require tight bends.

Material: Hot Dipped Galvanized steel, chemically treated and oiled.

GUARD I.D.	CATALOG NUMBER	PACKAGE LENGTH (FT)	STRIP THICKNESS	STRIP WIDTH	PITCH
.515	A2900	100'	.028	.375	.500
.560	A2901	100'	.028	.375	.500
.610	A2902	100'	.028	.375	.500
.650	A2903	100'	.028	.375	.500
.750	A2904	100'	.028	.375	.500
.835	A2905	100'	.028	.500	.688
.900	A2906	100'	.028	.500	.688
.990	A2907	100'	.028	.500	.688
1.055	A2908	100'	.028	.500	.688
1.110	A2909	100'	.028	.500	.688
1.240	A2910	100'	.028	.500	.688
1.300	A2911	60'	.028	.500	.688
1.380	A2912	60'	.042	.500	.812
1.630	A2913	60'	.042	.500	.812
2.125	A2917	40'	.042	.500	.812
2.300	A2919	40'	.042	.500	.812

Heavy Duty Poly Hose Guard



Heavy Duty Hose Guard can be easily placed around a single or bundle of hydraulic and pneumatic hoses. It protects against abrasion, and also provides crush resistance, reducing or eliminating costly premature hose failures.

Features: Resists oils, lubricants, gasoline and most solvents.

Temperature: -100°F to +220°F

Color: Black

Material: High Density Polyethylene

Guard I.D.	Catalog Number	Wall Thickness	Guard I.D.	Foot/Roll
.492	A9900	.069	.630	100'
.668	A9901	.086	.840	100'
1.014	A9902	.118	1.250	100'
1.600	A9903	.150	1.900	50'
2.457	A9904	.209	2.875	50'
3.065	A9905	.218	3.500	35'

Hose Sleeves and Guards

Abrasion Sleeve



Note: Wall thickness is for single wall.

Material: Bulk continuous filament nylon.

MSHA Accepted

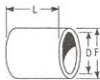
ISO 6945

A hose protection product used to help safeguard hose covers from abrasions and cuts. Typical areas of use include agricultural, logging, construction and mining applications. The abrasion sleeve is also useful for bundling two or more hose assemblies together, in addition to the protective qualities the sleeving provides. Available in .045" thin wall and .090" thick wall sleeving.

Sleeve I.D.	.045" Thin Wall Catalog Number	.090" Thick Wall Catalog Number	Package* Length (ft)	Flat I.D. (inch)
.90	A4900	A3900	100'	1.32-1.51
1.06	A4901	A3901	100'	1.57-1.76
1.22	A4902	A3902	100'	1.82-2.01
1.35	A4903	A3903	100'	2.03-2.21
1.66	A4904	A3904	100'	2.63-2.87
1.81	A4905	A3905	100'	2.75-2.94
2.19	A4906	A3906	100'	3.43-3.53
2.62	A4907	A3907	100'	4.02-4.21
2.80	A4908	A3908	100'	4.43-4.62

*Package contains two pieces that are not less than 30 feet long each.

Locator Clamp



Locator Clamps are designed for crimping to H14510 or H42510 hydraulic hoses to provide a support for routing clamps. Popular for use in Case equipment applications.

Note: Crimp using collet T-400-5C and spacer ring T-400-62 (yellow), flat side up.

Hose I.D.	Catalog Number	L	D	F
5/8	A4910	1.60	1.084	1.25

Hose Sleeves and Guards

Hose Bend Restrictors



Note: Colors RD, BU, GN, YW available by special order.

For use in protecting the last section of hose at the fitting connection, bend restrictors are designed to allow for an appropriate degree of "bend" without compromising the integrity of your hose assembly. Also recommended for hose assemblies which receive substantial handling, such as pressure washer, air, oil, and hydraulic fluid transfer applications.

Material: Plastisol MR 436
Gloss PVC

RESTRICTOR I.D.	CATALOG NUMBER	RESTRICTOR LENGTH (INCH)	HOSE TYPE APPLICATION
.530	A5953	6	H14504, H00904
.625	A5962	6	H10404, H20906, H24504, H34504, H42504
.690	A5969	6	H14506, H34506
.750	A5975	7	H10406, H20908, H24506, H30006
.840	A5984	7	H10408, H14508, H24508
.875	A5987	7	H34508

Firesleeve



Note: Refer to application chart on pages 71-77 for locating Firesleeve part numbers for specific Weatherhead hoses.

Firesleeve is a flame-resistant sheathing constructed of tightly-woven fiberglass coated with a specially compounded, highly temperature-resistant, silicone rubber. Firesleeve offers you protection in hostile environments involving heat extremes. Not compatible with hydrocarbons.

Temperature Range: Continuous exposure up to 500°F. Up to 2000°F for 15-20 minutes. Up to 3000°F for durations of 15-30 seconds.

Color: Red-Orange

SLEEVE I.D.	CATALOG NUMBER	ROLL LENGTH
1/2	A6908	100'
5/8	A6910	100'
3/4	A6912	100'
7/8	A6914	100'
1	A6916	100'
1-1/4	A6920	100'
1-1/2	A6924	100'
1-3/4	A6928	100'
2	A6932	50'
2-1/4	A6936	50'
2-1/2	A6940	50'
3	A6948	50'

Firesleeve Tape

⚠ Caution: Tests should be made to determine the suitability of Firesleeve product for each application.



Firesleeve Tape is manufactured from a high temperature-resistant, non-adhesive, silicone elastomer. It provides a self-bonding, self-curing insulator and used in conjunction with Eaton. Firesleeve, acts as an end sealant in preventing moisture and hydraulic oils from wicking into the inner braids of Firesleeve.

Maximum Temperature: +475° continuous.

TAPE COVERAGE	CATALOG NUMBER	ROLL LENGTH (INCH)
All sizes	A6900W	1x432

Hose Sleeves and Guards

HOSE TYPE	DASH SIZE	HOSE CLAMP	ROUND WIRE	FLAT WIRE	NYLON (.45)	NYLON (.90)	SILICONE	POLY
			SPRING GUARD	SPRING GUARD	ABRASION SLEEVE	ABRASION SLEEVE	FIBERGLASS FIRESLEEVE	HOSE GUARD
H009	04	HK0913	A1901	A2901	A4900	A3900	A6910	A9901
	05	HK1013	A1902	A2902	A4900	A4900	A6914	A9901
	06	HK1113	A1903	A2903	A4901	A3901	A6916	A9901
	08	HK1313	A1905	A2905	A4901	A3901	A6916	A9902
	12	HK1813	A1909	A2909	A4902	A3902	A6920	A9903
H017	04	HK1013	A1902	A2902	A4900	A3900	A6912	A9901
	06	HK1313	A1905	A2905	A4900	A3900	A6914	A9902
	08	HK1613	A1907	A2907	A4901	A3901	A6920	A9902
	12	HK2117	A1911	A2911	A4903	A3903	A6924	A9903
	16	HK2517	A1913	A2913	A4904	A3904	A6928	A9903
	20	HK2917	A1915	A2915	A4906	A3906	A6932	A9904
H039	12	HK2117	A1913	A2913	A4904	A3904	A6928	A9903
	16	HK2517	A1915	A2915	A4905	A3605	A6932	A9904
	20	HK2917	A1915	A2915	A4906	A3906	A6932	A9904
	24	HK3317	A1917	A2917	A4907	A3907	A6936	A9904
	32	HK3817	-	-	A4908	A3908	A6948	A9905
H057	03	HK0709	A1900	A2900	A4900	A3900	A6910	A9900
	04	HK1013	A1901	A2901	A4900	A3900	A6912	A9901
	05	HK1013	A1902	A2902	A4900	A3900	A6914	A9901
	06	HK1113	A1903	A2903	A4900	A3900	A6914	A9901
	07	HK1213	A1904	A2904	A4901	A3901	A6916	A9902
	08	HK1313	A1905	A2905	A4901	A3901	A6916	A9902
H059	04	HK0913	A1901	A2901	A4900	A3900	A6912	A9901
	05	HK1013	A1902	A2902	A4900	A3900	A6912	A9901
	06	HK1213	A1904	A2904	A4901	A3901	A6916	A9902
	08	HK1313	A1905	A2905	A4901	A3901	A6916	A9902
	10	HK1613	A1907	A2907	A4902	A3902	A6916	A9902
	12	HK1813	A1909	A2909	A4904	A3904	A6924	A9903
	16	HK2117	A1910	A2910	A4905	A3905	A6928	A9903
H069	04	HK0913	A1901	A2901	A4900	A3900	A6912	A9901
	05	HK1013	A1905	A2905	A4900	A3900	A6912	A9901
	06	HK1213	A1905	A2905	A4901	A3901	A6912	A9902
	08	HK1413	A1905	A2905	A4901	A3901	A6916	A9902
	10	HK1613	A1907	A2907	A4902	A3902	A6916	A9902
	12	HK1913	A1909	A2909	A4903	A3903	A6920	A9903
	16	HK2117	A1910	A2910	A4904	A3904	A6924	A9903
	20	HK2517	A1913	A2913	A4906	A3906	A6928	A9903
	24	HK2117	A1916	A2916	A4907	A3907	A6932	A9904
	32	-	A1919	A2919	-	-	A6940	A9904
	40	-	-	-	-	-	A6948	A9905
	48	-	-	-	-	-	-	-
H077	04	HK0913	A1902	A2902	A4900	A3900	A6912	A9901
	05	HK1013	A1902	A2903	A4900	A3900	A6914	A9901
	06	HK1113	A1903	A2903	A4901	A3901	A6914	A9901

Hose Sleeves and Guards

HOSE TYPE	DASH SIZE	HOSE CLAMP	ROUND WIRE	FLAT WIRE	NYLON (.45)	NYLON (.90)	SILICONE	POLY
			SPRING GUARD	SPRING GUARD	ABRASION SLEEVE	ABRASION SLEEVE	FIBERGLASS FIRESLEEVE	HOSE GUARD
H100	04	HK0913	A1900	A2900	A4900	A3900	A6912	A9901
	05	HK1013	A1903	A2903	A4900	A3900	A6912	A9901
	06	HK1113	A1903	A2903	A4900	A3900	A6912	A9902
	08	HK1313	A1905	A2905	A4901	A3901	A6916	A9902
	10	HK1613	A1907	A2907	A4902	A3902	A6920	A9902
	12	HK1813	A1908	A2908	A4903	A3903	A6924	A9903
H101	04	HK0913	A1902	A2902	A4900	A3900	A6910	A9901
	05	HK1013	A1903	A2903	A4900	A3900	A6912	A9901
	06	HK1113	A1903	A2903	A4900	A3900	A6912	A9901
	08	HK1413	A1905	A2905	A4902	A3902	A6916	A9902
	10	HK1613	A1907	A2907	A4903	A3903	A6920	A9902
	12	HK1813	A1908	A2908	A4903	A3903	A6924	A9903
H104	04	HK1903	A1902	A2902	A4900	A3900	A6912	A9901
	06	HK1213	A1904	A2904	A4900	A3900	A6914	A9902
	08	HK1413	A1907	A2907	A4902	A3902	A6920	A9902
	10	HK1613	A1907	A2907	A4903	A3903	A6924	A9902
	12	HK1913	A1910	A2910	A4903	A3903	A6924	A9903
	16	HK2317	A1913	A2913	A4904	A3904	A6928	A9903
	20	HK2117	A1916	A2916	A4906	A3906	A6936	A9904
H105	04	HK1113	A1903	A2903	A4900	A3900	A6914	A9901
	06	HK1313	A1905	A2905	A4903	A3903	A6914	A9902
	08	HK1513	A1907	A2907	A4904	A3904	A6924	A9902
	12	HK2017	A1910	A2910	A4904	A3904	A6924	A9903
	16	HK2517	A1913	A2913	A4906	A3906	A6932	A9903
H114	04	HK0913	A1902	A2902	A4900	A3900	A6912	A9901
	06	HK1113	A1904	A2904	A4900	A3900	A6914	A9901
	08	HK1413	A1906	A2906	A4902	A3902	A6920	A9902
H115	04	HK1113	A1902	A2902	A4900	A3900	A6912	A9901
	05	HK1113	A1904	A2904	A4900	A3900	A6912	A9901
	06	HK1213	A1904	A2904	A4900	A3900	A6914	A9902
	08	HK1513	A1907	A2907	A4901	A3901	A6920	A9902
	12	HK2017	A1910	A2910	A4903	A3903	A6924	A9903
	16	HK2317	A1913	A2913	A4904	A3904	A6928	A9903
	20	HK2117	A1916	A2916	A4906	A3906	A6936	A9904
	24	HK3317	A1917	A2917	A4907	A3907	A6940	A9904
H145	04	HK0913	A1900	A2900	A4900	A3900	A6912	A9900
	06	HK1113	A1904	A2904	A4901	A3901	A6916	A9901
	08	HK1413	A1906	A2906	A4901	A3901	A6916	A9902
	10	HK1613	A1908	A2908	A4903	A4903	A6924	A9902
	12	HK1813	A1910	A2910	A4903	A3903	A6924	A9902
	16	HK2317	A1913	A2913	A4904	A3904	A6928	A9903
H146	04	HK0913	A1902	A2902	A4900	A3900	A6912	A9901
	06	HK1213	A1905	A2905	A4901	A3901	A6914	A9902
	08	HK1413	A1906	A2906	A4901	A3901	A6920	A9903

Hose Sleeves and Guards

HOSE TYPE	DASH SIZE	HOSE CLAMP	ROUND WIRE	FLAT WIRE	NYLON (.45)	NYLON (.90)	SILICONE	POLY
			SPRING GUARD	SPRING GUARD	ABRASION SLEEVE	ABRASION SLEEVE	FIBERGLASS FIRESLLEEVE	HOSE GUARD
H166	04	HK0913	A1900	A2900	A4900	A3900	A6912	A9901
	05	HK1013	A1902	A2902	A4900	A3900	A6912	A9901
	06	HK1013	A1904	A2904	A4901	A3901	A6916	A9902
	08	HK1413	A1905	A2905	A4901	A3901	A6916	A9902
	10	HK1613	A1907	A2907	A4901	A3901	A6920	A9902
	12	HK1913	A1910	A2910	A4903	A3903	A6924	A9903
	16	HK2117	A1911	A2911	A4905	A3905	A6932	A9903
	20	HK2517	A1913	A2913	A4905	A3905	A6940	A9903
H169	04	HK1013	A1901	A2901	A4900	A3900	A6914	A9901
	05	HK1113	A1902	A2902	A4900	A3900	A6914	A9901
	06	HK1213	A1904	A2904	A4901	A3901	A6916	A9902
	08	HK1413	A1905	A2905	A4901	A3901	A6916	A9902
	10	HK1613	A1907	A2907	A4901	A3901	A6920	A9902
	12	HK1913	A1910	A2910	A4903	A3903	A6924	A9903
	16	HK2117	A1912	A2912	A4905	A3905	A6932	A9903
	20	HK2517	A1913	A2913	A4904	A3904	A6940	A9903
	24	HK2917	A1916	A2916	A4907	A3907	A6948	A9904
	32	HK3417	A1919	A2919	-	-	-	A9904
H190	04	HK1013	A1902	A2902	A4900	A3900	A6914	A9901
	06	HK1213	A1904	A2904	A4901	A3901	A6916	A9902
	08	HK1413	A1906	A2906	A4901	A3901	A6916	A9902
	10	HK1613	A1908	A2908	A4901	A3901	A6920	A9902
	12	HK1913	A1910	A2910	A4903	A3903	A6924	A9903
	16	HK2517	A1913	A2913	A4905	A3905	A6932	A9903
H201	04	HK0913	A1901	A2901	A4900	A3900	A3612	A9901
	06	HK1113	A1903	A2903	A4901	A3901	A6914	A9901
	08	HK1313	A1905	A2905	A4901	A3901	A6916	A9902
	10	HK1613	A1907	A2907	A4902	A3902	A6920	A9902
	12	HK1813	A1908	A2908	A4903	A3903	A6924	A9903
H209	04	HK0809	A1900	A2900	A4900	A3900	A6910	A9900
	05	HK0913	A1902	A2902	A4900	A3900	A6914	A9900
	06	HK1013	A1903	A2903	A4901	A3901	A6914	A9900
	08	HK1213	A1905	A2905	A4901	A3901	A6920	A9902
H213	04	HK0913	A1901	A2901	A4900	A3900	A6910	A9900
	05	HK1013	A1902	A2902	A4900	A3900	A6914	A9900
	06	HK1113	A1903	A2903	A4900	A3900	A6914	A9901
	08	HK1313	A1905	A2905	A4901	A3901	A6920	A9902
	10	HK1413	A1907	A2907	A4902	A3902	A6920	A9902
	12	HK1713	A1908	A2908	A4903	A3903	A6924	A9902
	16	HK2017	A1911	A2911	A4904	A3904	A6928	A9903
H229	04	HK0913	A1901	A2901	A4900	A3900	A6910	A9901
	06	HK1213	A1904	A2904	A4901	A3901	A6914	A9902
	08	HK1413	A1905	A2905	A4902	A3902	A6924	A9902
	10	HK1613	A1907	A2907	A4902	A3902	A6924	A9902

Hose Sleeves and Guards

HOSE TYPE	DASH SIZE	HOSE CLAMP	ROUND WIRE	FLAT WIRE	NYLON (.45)	NYLON (.90)	SILICONE	POLY
			SPRING GUARD	SPRING GUARD	ABRASION SLEEVE	ABRASION SLEEVE	FIBERGLASS FIRESLEEVE	HOSE GUARD
H229	12	HK2617	A1912	A2912	A4905	A3905	A6928	A9903
	16	HK2117	A1912	A2912	A4906	A3906	A6932	A9906
H239	04	HK0913	A1901	A2901	A4900	A3900	A6912	A9901
	08	HK1313	A1905	A2905	A4901	A3901	A6920	A9902
	10	HK1613	A1907	A2907	A4902	A3902	A6920	A9902
	12	HK1813	A1910	A2910	A4905	A3905	A6928	A9903
	16	HK2117	A1912	A2912	A4906	A3906	A6932	A9903
	20	HK2517	A1913	A2913	A4904	A3904	A6940	A9903
H243	03	HK0709	A1900	A2900	A4900	A3900	A6910	A9900
	04	HK0709	A1900	A2900	A4900	A3900	A6914	A9900
	05	HK0809	A1902	A2902	A4900	A3900	A6914	A9901
	06	HK0913	A1903	A2903	A4901	A3901	A6920	A9901
	08	HK1113	A1905	A2905	A4902	A3902	A6920	A9902
	12	HK1513	A1909	A2909	A4904	A3904	A6924	A9903
	16	HK1913	A1911	A2911	A4905	A3905	A6928	A9904
H245	04	HK1013	A1902	A2902	A4900	A3900	A6914	A9901
	06	HK1013	A1904	A2904	A4903	A3903	A6920	A9902
	08	HK1213	A1906	A2906	A4904	A3904	A6924	A9902
	10	HK1413	A1907	A2907	A4904	A3904	A6924	A9902
	12	HK1613	A1910	A2910	A4905	A3905	A6928	A9903
	16	HK2317	A1913	A2913	A4906	A3906	A6932	A9903
	20	HK2917	A1916	A2916	A4907	A3907	A6940	A9904
	24	HK3517	A1919	A2919	A4908	A3908	A6948	A9904
H265	04	HK0913	A1902	A2902	A4900	A3900	A6914	A9901
	06	HK1213	A1904	A2904	A4901	A3901	A6916	A9901
	08	HK1413	A1905	A2905	A4902	A3902	A6920	A9902
	12	HK1813	A1910	A2910	A4904	A3904	A6928	A9903
	16	HK2217	A1913	A2913	A4905	A3905	A6932	A9903
H275	03	HK0809	A1900	A2900	A4900	A3900	A6912	A9900
	04	HK0913	A1902	A2902	A4900	A3900	A6914	A9901
	06	HK1113	A1903	A2903	A4901	A3901	A6916	A9901
	08	HK1413	A1905	A2905	A4902	A3902	A6920	A9902
	12	HK1813	A1907	A2907	A4904	A3904	A6924	A9902
	16	HK2217	A1913	A2913	A4905	A3905	A6928	A9903
	20	HK2917	A1916	A2916	A4907	A3907	A6936	A9904
	24	HK3217	A1917	A2917	A4908	A3908	A6940	A9904
	30	HK3817	A1920	A2920	A4909	A3909	A6948	A9904
	32	HK3817	A1921	A2921	A4910	A3910	A6948	A9904
H277	03	HK0709	A1900	A2900	A4900	A3900	A6910	A9900
	04	HK0709	A1900	A2900	A4900	A3900	A6914	A9900
	05	HK0809	A1900	A2900	A4901	A3901	A6920	A9902
	06	HK0913	A1903	A2903	A4902	A3902	A6920	A9902
	08	HK1113	A1903	A2903	A4901	A3901	A6920	A9902
	12	HK1513	A1907	A2907	A4904	A3904	A6928	A9903
	16	HK1913	A1910	A2910	A4905	A3905	A6932	A9903
	20	HK2517	A1913	A2913	A4904	A3904	A6940	A9903

Hose Sleeves and Guards

HOSE TYPE	DASH SIZE	HOSE CLAMP	ROUND WIRE	FLAT WIRE	NYLON (.45)	NYLON (.90)	SILICONE	POLY
			SPRING GUARD	SPRING GUARD	ABRASION SLEEVE	ABRASION SLEEVE	FIBERGLASS FIRESLEEVE	HOSE GUARD
H280	04	HK1013	A1901	A2901	A4900	A3900	A6914	A9901
	06	HK1213	A1904	A2904	A4901	A3901	A6920	A9902
	08	HK1413	A1906	A2906	A4901	A3901	A6920	A9902
	10	HK1613	A1907	A2907	A4904	A3904	A6928	A9903
	12	HK1913	A1910	A2910	A4904	A3904	A6928	A9903
16	HK2517	A1913	A2913	A4905	A3905	A6932	A9903	
H285	04	HK0913	A1900	A2900	A4900	A3900	A6914	A9900
	06	HK1213	A1903	A2903	A4901	A3901	A6916	A9901
	08	HK1413	A1905	A2905	A4901	A3901	A6920	A9902
	12	HK1813	A1910	A2910	A4904	A3904	A6924	A9903
	16	HK2217	A1912	A2912	A4905	A3905	A6928	A9903
H290	04	HK1113	A1903	A2903	A4900	A3900	A6914	A9901
	06	HK1313	A1905	A2905	A4901	A3901	A6916	A9902
	08	HK1513	A1907	A2907	A4902	A3902	A6920	A9902
	10	HK1713	A1909	A2909	A4904	A3904	A6924	A9903
	12	HK2017	A1910	A2910	A4904	A3904	A6928	A9903
	16	HK2517	A1913	A2913	A4904	A3904	A6932	A9903
H324	06	HK1313	A1905	A2905	A4900	A3900	A6924	A9902
H325	04	HK1013	A1903	A2903	A4900	A3900	A6914	A9901
	06	HK1313	A1905	A2905	A4900	A3900	A3616	A9902
	08	HK1513	A1907	A2907	A4901	A3901	A6920	A9902
	12	HK2017	A1910	A2910	A4904	A3904	A6928	A9903
	16	HK2517	A1913	A4913	A4904	A3904	A3932	A9903
H335	03	HK0913	A1901	A2901	A4900	A3900	A6916	A9901
	04	HK1113	A1903	A2903	A4901	A3901	A6916	A9902
	06	HK1313	A1904	A2904	A4902	A3902	A6920	A9902
	08	HK1513	A1907	A2907	A4902	A3902	A6924	A9902
	12	HK1913	A1910	A2910	A4903	A3903	A6924	A9903
	16	HK2517	A1913	A2913	A4905	A3905	A6928	A6603
H336	03	HK0913	A1901	A2901	A4900	A3900	A6916	A9901
	04	HK1113	A1903	A2903	A4901	A3901	A6916	A9902
	06	HK1313	A1904	A2904	A4902	A3902	A6920	A9902
	08	HK1513	A1907	A2907	A4902	A3902	A6924	A9903
	12	HK1913	A1910	A2910	A4903	A3903	A6924	A9903
	16	HK2517	A1913	A2913	A4905	A3905	A6928	A9902
H338	06	HK1313	A1905	A2905	A4900	A3900	A6920	A9902
	08	HK1513	A1907	A2907	A4901	A3901	A6920	A9902
H345	04	HK0913	A1900	A2900	A4900	A3900	A6916	A9901
	06	HK1113	A1904	A2904	A4900	A3900	A6920	A9902
	08	HK1313	A1905	A2905	A4901	A3901	A6924	A9902
H350	06	HK1313	A1904	A2904	A4901	A3901	A6916	A9902
	08	HK1513	A1906	A2906	A4901	A3901	A6916	A9902
	10	HK1813	A1908	A2908	A4904	A3904	A6924	A9903
	12	HK2017	A1910	A2910	A4905	A3905	A6928	A9903
	16	HK2517	A1913	A4913	A4906	A3906	A6936	A9903

Hose Sleeves and Guards

HOSE TYPE	DASH SIZE	HOSE CLAMP	ROUND WIRE	FLAT WIRE	NYLON (.45)	NYLON (.90)	SILICONE	POLY
			SPRING GUARD	SPRING GUARD	ABRASION SLEEVE	ABRASION SLEEVE	FIBERGLASS FIRESLEEVE	HOSE GUARD
H366	06	HK1213	A1904	A2904	A4901	A3901	A6916	A9902
	08	HK1413	A1905	A2905	A4901	A3901	A6916	A9902
H400	10	HK1713	A1909	A2909	A4903	A3903	A6920	A9903
H425	04	HK1113	A1903	A2903	A4900	A3900	A6916	A9902
	06	HK1313	A1905	A2905	A4900	A3900	A6916	A9902
	08	HK1513	A1907	A2907	A4902	A3902	A6920	A9902
	10	HK1713	A1909	A2909	A4903	A3903	A6920	A9903
	12	HK2017	A1911	A2911	A4903	A3903	A6924	A9903
	16	HK2517	A1913	A2913	A4905	A3905	A6928	A9903
	20	HK3117	A1916	A2916	A4906	A3906	A6936	A9904
	24	HK3417	A1919	A2919	A4907	A3907	A6940	A9904
	32	HK3817	-	-	-	-	-	A9905
H430	08	HK1613	A1908	A2908	A4904	A3904	A6924	A9903
	12	HK2117	A1912	A2912	A4905	A3905	A6928	A9903
	16	HK2517	A1913	A2913	A4906	A3906	A6936	A9903
	20	HK3117	A1916	A2916	A4907	A3907	A6940	A9904
	24	-	A1919	A2919	A4907	A3907	A6940	A9904
	32	HK3817	-	-	-	-	-	A9905
H435	04	HK0809	A1900	A2900	A4900	A3900	A6912	A9901
	05	HK1013	A1903	A2903	A4900	A3900	A6912	A9901
	06	HK1113	A1904	A2904	A4900	A3900	A6916	A9901
	08	HK1413	A1906	A2906	A4902	A3902	A6920	A9902
	12	HK1813	A1910	A2910	A4903	A3903	A6924	A9903
	16	HK2317	A1913	A2913	A4904	A3904	A6928	A9903
H436	04	HK0809	A1900	A2900	A4900	A3900	A6912	A9901
	05	HK1013	A1903	A2903	A4900	A3900	A6912	A9901
	06	HK1113	A1904	A2904	A4901	A3901	A6916	A9901
	08	HK1413	A1906	A2906	A4902	A3902	A6920	A9902
	12	HK1813	A1910	A2910	A4903	A3903	A6924	A9903
	16	HK2317	A1913	A2913	A4904	A3904	A6928	A9903
H470	08	HK1713	A1908	A2908	A4901	A3901	A6916	A9902
	12	HK2117	A1911	A2911	A4904	A3904	A6928	A9903
	16	HK2517	A1913	A2913	A4904	A3904	A6928	A9903
	20	HK3217	A1917	A2917	A4906	A3906	A6936	A9904
	24	HK3417	A1919	A2919	A4907	A3907	A6940	A9904
	32	HK3817	-	-	-	-	-	A9905
H545	04	HK1013	A1902	A2902	A4900	A3900	A6912	A9901
	06	HK1213	A1904	A2904	A4901	A3901	A6916	A9901
	08	HK1513	A1906	A2906	A4901	A3901	A6916	A9902
	10	HK1713	A1907	A2907	A4903	A3903	A6924	A9902
	12	HK2017	A1910	A2910	A4904	A3904	A6928	A9903
	16	HK2517	A1913	A2913	A4906	A3906	A6936	A9903

Hose Sleeves and Guards

HOSE TYPE	DASH SIZE	HOSE CLAMP	ROUND WIRE	FLAT WIRE	NYLON (.45)	NYLON (.90)	SILICONE	POLY
			SPRING GUARD	SPRING GUARD	ABRASION SLEEVE	ABRASION SLEEVE	FIBERGLASS FIRESLEEVE	HOSE GUARD
H569	04	HK0913	A1901	A2901	A4900	A3900	A6912	A9901
	05	HK1113	A1902	A2902	A4900	A3900	A6912	A9901
	06	HK1213	A1904	A2904	A4901	A3901	A6916	A9902
	08	HK1413	A1905	A2905	A4901	A3901	A6916	A9902
	10	HK1613	A1907	A2907	A4901	A3901	A6916	A9902
	12	HK1913	A1910	A2910	A4903	A3903	A6924	A9903
	16	HK2117	A1911	A2911	A4904	A3904	A6928	A9903
	20	HK2517	A1913	A2913	A4906	A3906	A6936	A9903
H757	06	HK1013	A1902	A2902	A4900	A3900	A6916	A9901
	08	HK1213	A1904	A2904	A4900	A3900	A6920	A9902
	10	HK1313	A1905	A2905	A4901	A3901	A6920	A9902
	12	HK1613	A1907	A2907	A4902	A3902	A6924	A9902
	14	HK1913	A1910	A2910	A4903	A3903	A6924	A9903