

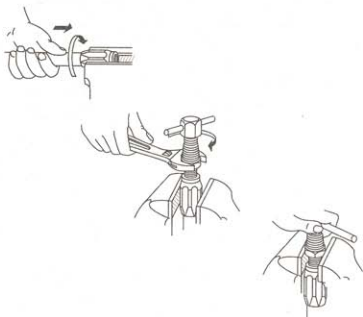
# COLLOCRIMP

## Field Attachable

### 069 'D' Series

†To determine the correct length of hose, subtract the cut-off factor for each end fitting from the overall length of assembly.

#### Hose End 069 'D' Series



**Typical Application:** Medium pressure and high temperature hose lines for a variety of applications including truck, industrial, and small engine where temperature may be a problem.

**Compatible Hose:** H069, H166, H169, H229, H366.

**Pressure:** Determined by hose burst pressure. See page 14 for working pressure ratings for hose end configurations.

**Material:** AISI/SAE 12L14 carbon steel

**Plating:** Zinc; yellow dichromate finish

**Advantages:** Very popular in heavy-duty truck markets. Can be used with a variety of hoses allowing for a diverse number of applications.

**Ordering Information:** Order individually by catalog number. For mandrel, see page 384.

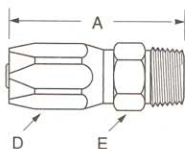
#### Assembly Instructions:

1. Lubricate mandrel, insert threads and I.D. of hose.
  2. Screw hose into socket (left-hand thread) until hose bottoms. Back out 1/4 turn.
  3. Place insert on mandrel. Screw insert into socket. When assembling swivel ends, leave 1/32" clearance between swivel nut and socket.
- Note:** Refer to current price list for availability of cataloged items. Configurations and dimensions subject to change without notice.

**Label Set:** FS-600

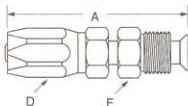
⚠ Refer to important safety information on page 3 of this catalog.

#### Male Pipe Rigid

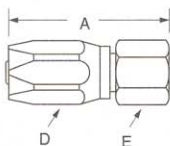


HOSE I.D.	PIPE SIZE	CATALOG NUMBER	THREAD SIZE	A	HOSE CUT-OFF FACTOR†	HOLE DIA.	HEX D	HEX E
3/16	1/8	06904D-102	1/8-27	1.72	1.00	.17	5/8	7/16
3/16	1/4	06904D-104	1/4-18	1.90	1.19	.17	5/8	9/16
1/4	1/4	06905D-104	1/4-18	2.00	1.25	.25	11/16	9/16
5/16	1/4	06906D-104	1/4-18	2.10	1.25	.30	13/16	5/8
13/32	3/8	06908D-106	3/8-18	2.48	1.38	.39	15/16	11/16
13/32	1/2	06908D-108	1/2-14	2.73	1.63	.39	15/16	7/8
1/2	1/2	06910D-108	1/2-14	2.88	1.63	.48	1-1/8	7/8
5/8	3/4	06912D-112	3/4-14	3.25	1.75	.61	1-1/4	1-1/16
7/8	3/4	06916D-112	3/4-14	2.81	1.63	.72	1-7/16	1-1/8
7/8	1	06916D-116	1-11-1/2	3.00	1.81	.81	1-7/16	1-3/8
1-1/8	1-1/4	06920D-120	1-1/4-11-1/2	3.18	1.88	1.05	1-3/4	1-11/16
1-3/8	1-1/2	06924D-124	1-1/2-11-1/2	3.47	2.06	1.28	1-15/16	2
1-13/16	2	06932D-132	2-11-1/2	3.99	2.25	1.75	2-1/2	2-1/2
2-3/8	2-1/2	06940T-140*	2-1/2-8	5.03	3.13	2.20	3-1/8	3
3	3	06948T-148*	3-8	5.09	3.19	2.83	3-7/8	3-3/4

\*Brass construction.

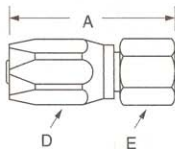
**Field Attachable  
069 'D' Series**
**Inverted Male  
Swivel Straight**


HOSE I.D.	TUBE SIZE	CATALOG NUMBER	THREAD SIZE	A	HOSE CUT-OFF FACTOR†	HOLE DIA.	HEX D	HEX F
3/16	1/4	06904D-B04	7/16-24	2.10	1.38	.17	5/8	7/16
1/4	5/16	06905D-B05	1/2-20	2.40	1.69	.23	11/16	1/2
5/16	3/8	06906D-B06	5/8-18	2.71	1.81	.30	13/16	5/8

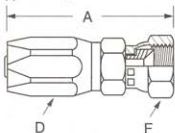
**JIC 37° Female Swivel  
(Exceptions Noted for 45° Flare)  
(Refer to Footnotes)**


HOSE I.D.	TUBE SIZE	CATALOG NUMBER	THREAD SIZE	A	HOSE CUT-OFF FACTOR†	HOLE DIA.	HEX D	HEX E
3/16	1/4	06904D-604 <sup>a</sup>	7/16-20	1.74	1.06	.17	5/8	9/16
1/4	5/16	06905D-605 <sup>a</sup>	1/2-20	1.90	1.19	.24	11/16	5/8
5/16	3/8	06906D-606	9/16-18	2.05	1.19	.30	13/16	11/16
13/32	1/2	06908D-608 <sup>a</sup>	3/4-16	2.52	1.44	.39	15/16	7/8
1/2	5/8	06910D-610 <sup>a</sup>	7/8-14	2.79	1.56	.49	1-1/8	1
5/8	3/4	06912D-612	1-1/16-12	3.15	1.63	.61	1-1/4	1-1/4
7/8	1	06916D-616	1-5/16-12	2.81	1.63	.82	1-7/16	1-1/2
1-1/8	1-1/4	06920D-620	1-5/8-12	3.00	1.69	1.05	1-3/4	2
1-3/8	1-1/2	06924D-624	1-7/8-12	3.28	1.88	1.28	1-15/16	2-1/4
1-13/16	2	06932D-632	2-1/2-12	4.02	2.25	1.75	2-1/2	2-7/8
2-3/8	2-1/2	06940T-640*	3-12	4.16	2.25	2.22	3-1/8	3-3/8
3	3	06948T-648*	3-1/2-12	4.28	2.37	2.83	3-7/8	4

\*Brass construction.

**SAE 45° Female Swivel**


HOSE I.D.	TUBE SIZE	CATALOG NUMBER	THREAD SIZE	A	HOSE CUT-OFF FACTOR†	HOLE DIA.	HEX D	HEX E
5/16	3/8	06906D-406	5/8-18	2.05	1.19	.29	13/16	3/4
5/8	3/4	06912D-412	1-1/16-14	3.02	1.44	.61	1-1/4	1-1/4

**30° Flare Female Swivel  
(PTT Thread For Diesel  
Applications)**


HOSE I.D.	TUBE SIZE	CATALOG NUMBER	THREAD SIZE	A	HOSE CUT-OFF FACTOR†	HOLE DIA.	HEX D	HEX F
7/8	1	06916D-X26	1-5/16-14	3.20	1.94	.81	1-7/16	1-1/2

(See page 294 for PTT Thread Adapter.)

†To determine the correct length of hose, subtract the cut-off factor for each end fitting from the overall length of assembly.

<sup>a</sup> Swivel nuts are universal – both SAE 45° and 37° connections.