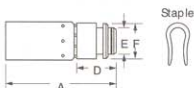


†To determine the correct length of hose, subtract the cut-off factor for each end fitting from the overall length of assembly.

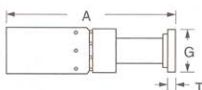
### READY LOK® Male Connector (For Deep Mining Markets)



HOSE ID	CONNECT. SIZE	CATALOG NUMBER	A	HOSE CUT-OFF FACTOR†	HOLE DIA.	LENGTH D	DIA. E	DIA. F
1/4	1/4	04U-04S	2.82	1.31	.16	1.13	.39	.59
3/8	3/8	06U-06S	2.84	1.31	.26	1.13	.54	.78
1/2	1/2	08U-08S	2.82	1.31	.36	1.13	.70	.94
3/4	3/4	12U-12S	3.64	1.50	.61	1.13	.94	1.14
1	1	16U-16S	3.94	1.75	.81	1.34	1.22	1.53
1-1/4	1-1/4	20U-20S	4.06	1.75	1.02	1.34	1.49	1.80

O-ring and backup ring included.  
(See page 316 for READY-LOK® Staple and O-ring.)

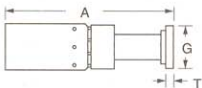
### Split Flange Straight (SAE Code 61)



HOSE ID	NOMINAL FLANGE SIZE	CATALOG NUMBER	REPLACEMENT O-RING (NOT INCLUDED)	A	HOSE CUT-OFF FACTOR	HOLE DIA.	DIA. G	T
1/2	1/2	08U-G08	8x252	3.94	2.50	.33	1.19 (30mm)	.265
3/4	3/4	12U-G12	12x252	4.40	2.25	.58	1.50 (38mm)	.265
3/4	1	12U-G16	16x252	4.40	2.25	.58	1.75 (44mm)	.315
1	1	16U-G16	16x252	4.58	2.38	.77	1.75 (44mm)	.315
1	1-1/4	16U-G20	20x252	4.58	2.38	.77	2.00 (51mm)	.315
1-1/4	1-1/4	20U-G20	20x252	5.04	2.75	1.02	2.00 (51mm)	.315
1-1/4	1-1/2	20U-G24	24x252	5.12	2.81	1.02	2.38 (60mm)	.315

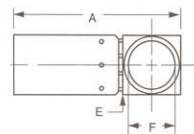
(See page 318 for Code 61 Split Flange Kits.)

### Split Flange Straight - Metric (Komatsu, Linkbelt, etc.)



HOSE ID	NOMINAL FLANGE SIZE	CATALOG NUMBER	REPLACEMENT O-RING (NOT INCLUDED)	A	HOSE CUT-OFF FACTOR	HOLE DIA.	DIA. G	T
5/8	16mm (5/8")	10U-G09	10x252	4.18	2.25	.46	34mm (1.325")	.265

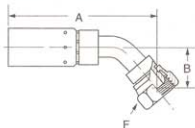
### Banjo (Ford Tractor)



HOSE ID	CATALOG NUMBER	A	HOSE CUT-OFF FACTOR	HOLE DIA.	HEX E
3/8	06U-L06	2.56	.69	7/8	.62

†To determine the correct length of hose, subtract the cut-off factor for each end fitting from the overall length of assembly.

**British Standard 60°  
 Cone (BSPP) Female  
 Swivel 45° Tube Elbow**

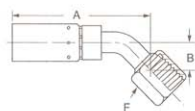


HOSE I.D.	BSPP PIPE SIZE	CATALOG NUMBER	THREAD SIZE	A	B	HOSE CUT-OFF FACTOR†	HOLE DIA.	HEX F
1/4	1/4	04U-44P	G-1/4-19*	3.69	.91	2.25	.15	3/4
3/8	3/8	06U-46P	G-3/8-19*	3.85	.90	2.44	.25	7/8
1/2	1/2	08U-48P	G-1/2-14*	3.88	.87	2.44	.33	1-1/16
5/8	5/8	10U-50P	G-5/8-14*	4.38	.98	2.44	.46	1-3/16
3/4	3/4	12U-52P	G-3/4-14*	5.53	1.31	3.38	.61	1-1/4
1	1	16U-56P	G-1-11*	5.34	1.44	3.13	.76	1-1/2
1-1/4	1-1/4	20U-60P*	G-1 1/4-11*	5.10	1.12	2.75	1.02	1-7/8

\*G As Part of Thread Size is ISO Designation for Parallel Thread.

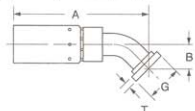
\*Part number will crimp in COCT-410-1, T-420-1 and T-440-1 presses only.

**Female FOR-SEAL®  
 Swivel 45° Tube Elbow**



HOSE I.D.	TUBE SIZE	CATALOG NUMBER	THREAD SIZE	A	B	HOSE CUT-OFF FACTOR†	HOLE DIA.	HEX F
1/4	1/4	04U-L64	9/16-18	3.14	.41	1.68	.16	11/16
1/4	3/8	04U-L66	11/16-16	3.24	.43	1.75	.16	13/16
3/8	3/8	06U-L66	11/16-16	3.26	.43	1.81	.26	13/16
3/8	1/2	06U-L68	13/16-16	3.58	.60	2.15	.26	15/16
1/2	3/8	08U-L66	11/16-16	3.32	.43	1.88	.26	13/16
1/2	1/2	08U-L68	13/16-16	3.56	.60	2.13	.36	15/16
1/2	5/8	08U-L70	1-14	3.67	.65	2.25	.36	1-1/8
5/8	5/8	10U-L70	1-14	4.13	.65	2.19	.46	1-1/8
5/8	3/4	10U-L72	1-3/16-12	4.53	.84	2.63	.48	1-3/8
3/4	5/8	12U-L70	1-14	4.49	.65	2.31	.46	1-1/8
3/4	3/4	12U-L72	1-3/16-12	4.96	.84	2.81	.59	1-3/8
3/4	1	12U-L76	1-7/16-12	5.29	.94	3.13	.76	1-5/8
1	3/4	16U-L72	1-3/16-12	4.99	.83	2.79	.56	1-3/8
1	1	16U-L76	1-7/16-12	5.29	.95	3.06	.76	1-5/8
1	1-1/4	16U-L80	1-11/16-12	5.00	1.07	2.81	.81	1-7/8
1-1/4	1-1/4	20U-L80	1-11/16-12	5.07	1.07	2.75	1.01	1-7/8

**Split Flange 45° Tube  
 Elbow - Metric  
 (Komatsu, Linkbelt, etc.)**



HOSE I.D.	NOMINAL FLANGE SIZE	CATALOG NUMBER	REPLACEMENT O-RING (NOT INCLUDED)	A	B	HOSE CUT-OFF FACTOR†	HOLE DIA.	DIA. G	T NOMINAL
5/8	16mm (5/8)	10U-G69	10x252	4.21	.94	2.25	.46	34mm (1.335)	.265